

2727 W. 5TH AVE
DENVER, COLORADO

Gruber Commercial Real Estate, Inc | 209 Kalamath Street #9, Denver, CO 80223 | Tel: 720-490-1442



INDUSTRIAL BUILDING FRONTING ON 6TH AVE WITH FENCED PARKING & LOADING

BUILDING SIZE: 36,750/SF

PROPERTY HIGHLIGHTS

- Freestanding building
- Fenced parking lot
- Fenced loading zone
- Skylights
- Temperature controlled building
- Additionally mezzanine space (not in building SF)
- Higher end office finishes
- Major frontage/exposure on 6th Avenue



LEASE RATE
\$10.50 NNN

Russell Gruber

Industrial Specialist / Owner

Cell: 720-490-1442

russell@grubercre.com

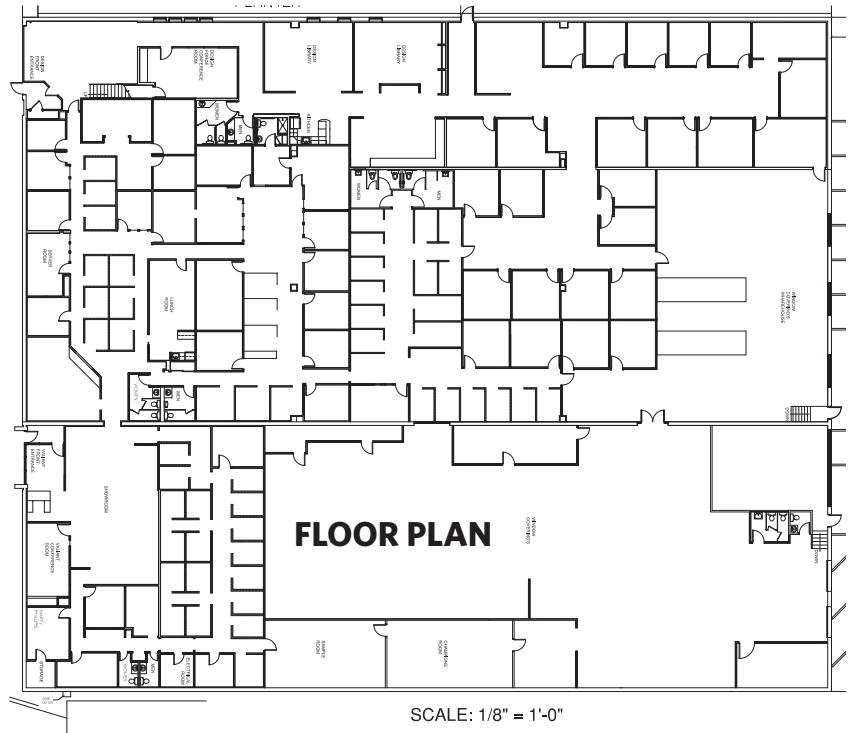
Gruber

COMMERCIAL REAL ESTATE

grubercommercial.com

PROPERTY DETAILS

- **Building Size:** 36,750/SF
- **Site Size:** 106,816/SF (2.45 acres)
- **Office:** TBD
- **Zoning:** I-MX-3
- **YOC:** 1969
- **Construction Type:** Masonry
- **Sprinkler:** Yes
- **Power:** Heavy
- **Clear Height:** 18'ft
- **Loading:** 5 dock high doors, 1 oversized interior dock door
- **Lease Rate:** \$10.00/NNN
- **Estimated NNN (2024):** \$4.50/SF



AERIAL VIEW



Russell Gruber
Industrial Specialist / Owner
Cell: 720-490-1442
russell@grubercre.com



grubercommercial.com

The information above has been obtained from sources believed reliable. While we do not doubt its accuracy, we have not verified it and make no guarantee, warranty or representation about it. It is your responsibility to independently confirm its accuracy and completeness. Any projections, opinions, assumptions or estimates used are for example only and do not represent the current or future performance of the property. The value of this transaction to you depends on tax and other factors which should be evaluated by your tax, financial and legal advisors. You and your advisors should conduct a careful, independent investigation of the property to determine to your satisfaction the suitability of the property for your needs. Gruber Commercial Real Estate Services.