

4230

ELATI STREET

DENVER, COLORADO

**FOX NORTH NEIGHBORHOOD
CORNER SITE/SOUTH END**

**FOR
SALE**



SITE SIZE: 35,875 SF | BUILDING SIZE: 16,460 SF | SALE PRICE: \$5,360,880.00

PROPERTY OVERVIEW

Overview

4230 Elati Street, Denver, Colorado is a 16,460/SF Twin-T industrial building located on a 35,875/SF corner site with an 8-Story-up-zoning already complete! The property is located in the very sought after Fox North neighborhood, which is just minutes from downtown Denver, adjacent to the LoHi, Sunnyside, and RiNo neighborhoods. The location of the property within the Fox Park area offers expansive views of downtown Denver, the front range mountains, and the RiNo neighborhood. In addition to its in-demand location, the property is one block from the 41st and Fox Gold Line Station, which is one stop from Union Station in downtown Denver. The Gold Line is a high speed commuter rail line that runs west from Union Station all the way to the Wheat Ridge neighborhood. The Fox North area historically has been industrial oriented buildings with some residential. The Light Rail/Commuter Rail line on Fox Street and Denver's 2015/2019 Blue Print updates have made the area prime for infill residential and mixed use development.

Property Description

35,875 SF CORNER SITE/SOUTH END FOR SALE AT \$5,360,880.00

PROPERTY ADDRESS: **4230 Elati Street, Denver, Colorado 80216**

BUILDING SIZE: **16,460 SF**

SITE SIZE: **35,875 SF (.82 acres)**

CITY/COUNTY: **Denver/Denver**

ZONING: **C-RX-8**

YOC: **1973**

WATER: **1" waterline (Denver water)**

POWER: **3-phase 400 amps (Xcel Engergy)**

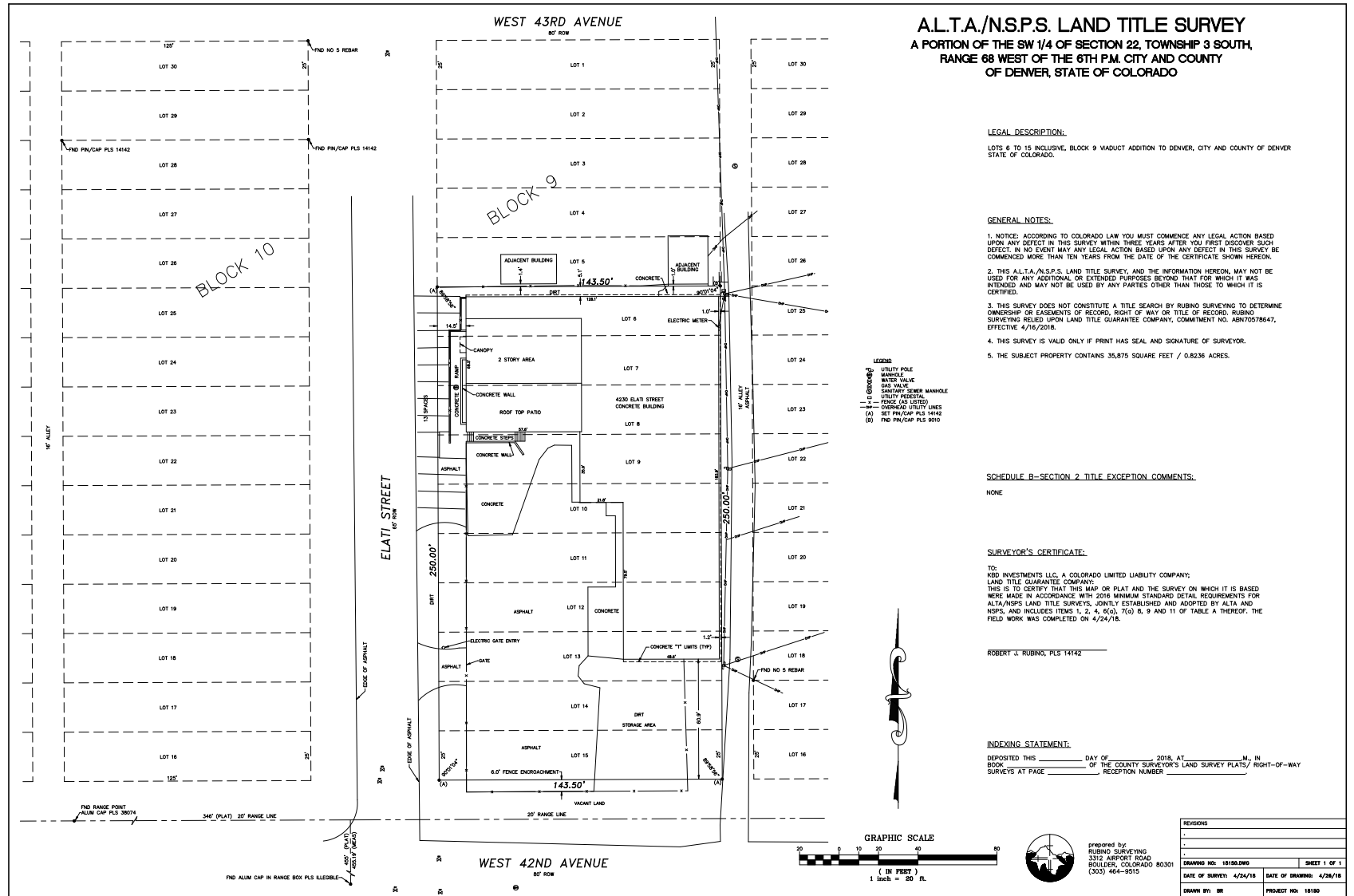
HEAT: **Gas Forced**

A/C: **Forced air and A/C in-office only**

LOADING: **Seven (7) drive-in loading doors (10' x 9')**

TAXES (2021): **\$66,008.58**

PROPERTY SURVEY



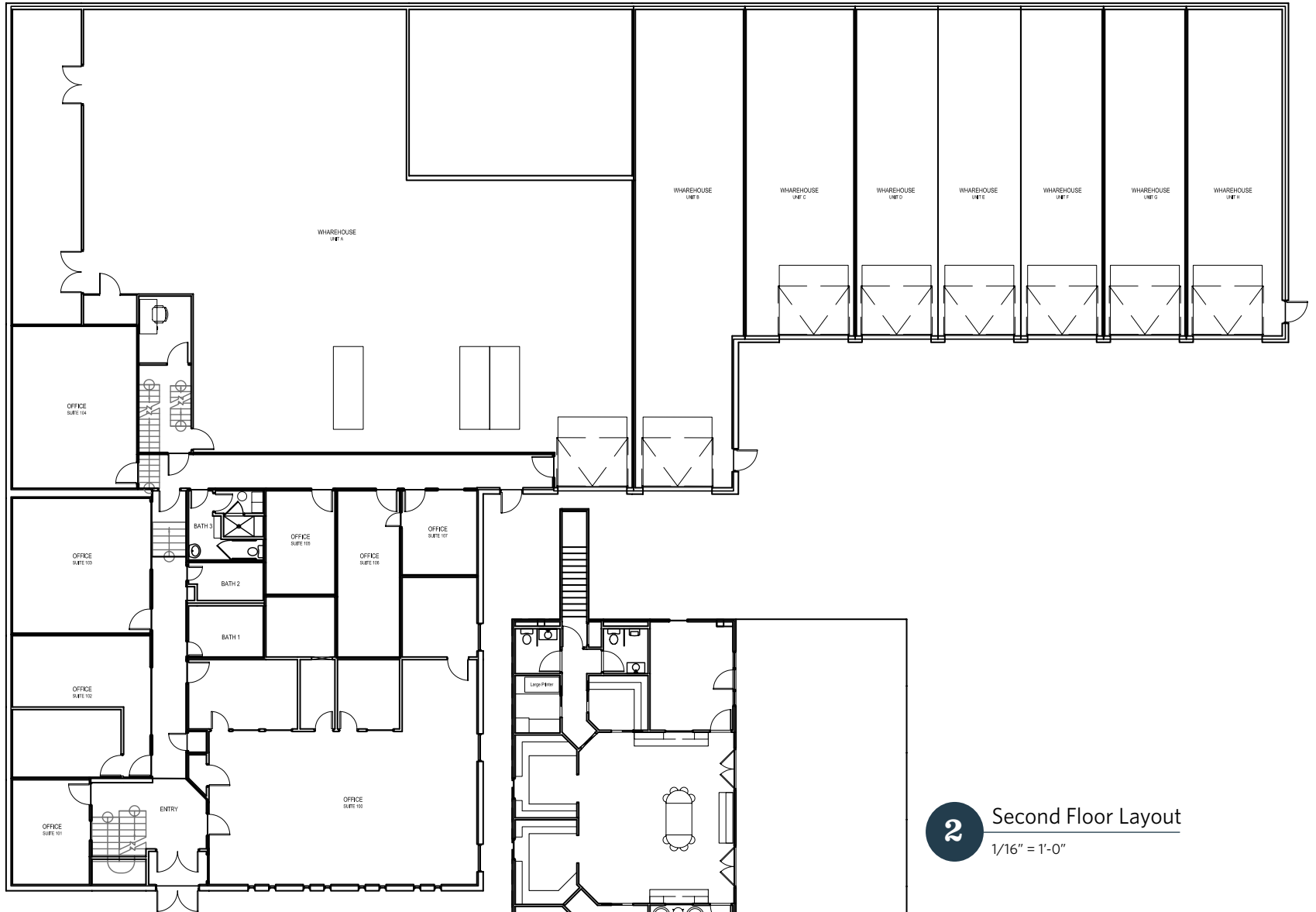
PROPERTY PHOTOS



PROPERTY AERIAL



PROPERTY FLOOR PLAN



1 First Floor Layout
1/16" = 1'-0"

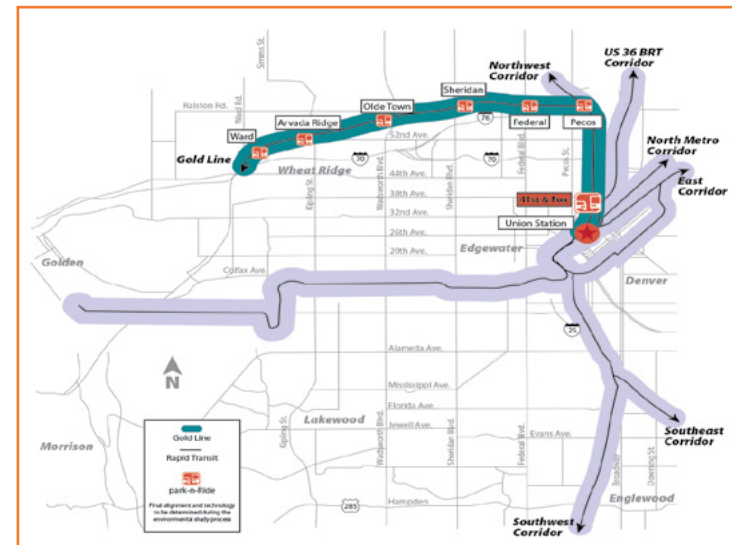
2 Second Floor Layout
1/16" = 1'-0"

LIGHT RAIL STATION AREA

Station Area Location



The 41st and Fox Station is the first station outside of Downtown on the Gold Line and Northwest Rail corridors — five minutes from Union Station



The 41st and Fox Station and the Gold Line will be part of the future FasTracks System

4230

ELATI STREET

DENVER, COLORADO

**FOX NORTH NEIGHBORHOOD
CORNER SITE/SOUTH END**

**FOR
SALE**



CONTACT:



Russell Gruber Industrial Specialist/Owner

📍 209 Kalamath Street, #9, Denver, CO 80223

📞 (720) 490-1442

✉️ russell@grubercre.com

Gruber
COMMERCIAL REAL ESTATE

📍 grubercommercial.com

The information above has been obtained from sources believed reliable. While we do not doubt its accuracy, we have not verified it and make no guarantee, warranty or representation about it. It is your responsibility to independently confirm its accuracy and completeness. Any projections, opinions, assumptions or estimates used are for example only and do not represent the current or future performance of the property. The value of this transaction to you depends on tax and other factors which should be evaluated by your tax, financial and legal advisors. You and your advisors should conduct a careful, independent investigation of the property to determine to your satisfaction the suitability of the property for your needs. Gruber Commercial Real Estate, Inc.