



4400–4450 Lipan Street, Denver, CO, 80211

Warehouse/Manufacturing Building for Sale or Lease

FOR SALE OR LEASE

TOTAL BUILDING SIZE: 42,714/SF

PROPERTY HIGHLIGHTS

- Central Denver Location
- Sprinklered
- .8 Acre Fenced Yard
- Heavy Power (2240 amps, 208V, 3-phase)
- Paint Booth
- Drive-thru loading in warehouse

FOR SALE: \$6,250,000

FOR LEASE: Call Broker for Quote

For More Information, Contact:

Steve Fletcher | *Industrial Specialist*
(720) 320-0366
steve@grubercr.com

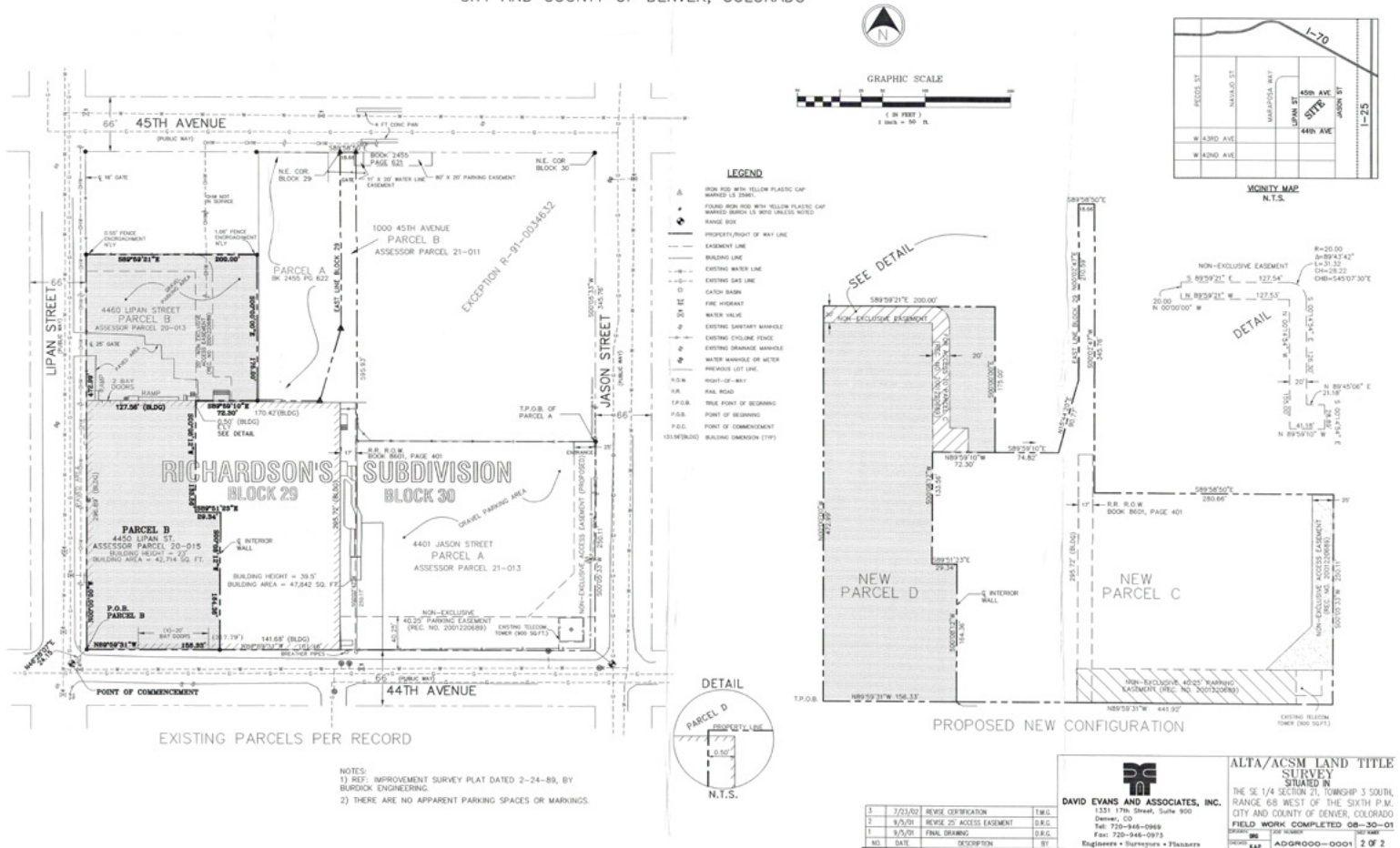
UNIT	SIZE	AVAILABILITY
4400	17,000/SF	LEASED
4450 A	15,714/SF	VACANT
4450 B	10,000/SF	VACANT
Yard A		VACANT
Yard B		LEASED

PROPERTY DETAILS

- For Sale: \$6,250,000
- For Lease: Call Broker for Quote
- CAM (2024): \$3.70/SF
- Site Size: 1.79 Acres (77,770/SF)
- Ceiling Height: 14' to 17'
- Property Taxes: \$113,333 (2023)
- Loading: Dock High and Drive-In Loading
- Zoning: I-A, City of Denver

PROPERTY SURVEY

A.L.T.A./ A.C.S.M. LAND TITLE SURVEY
BLOCKS 29 & 30, RICHARDSON'S SUBDIVISION
PART OF THE NORTHEAST ONE-QUARTER OF SECTION 21,
TOWNSHIP 3 SOUTH, RANGE 68 WEST OF THE 6th PRINCIPAL MERIDIAN
CITY AND COUNTY OF DENVER, COLORADO

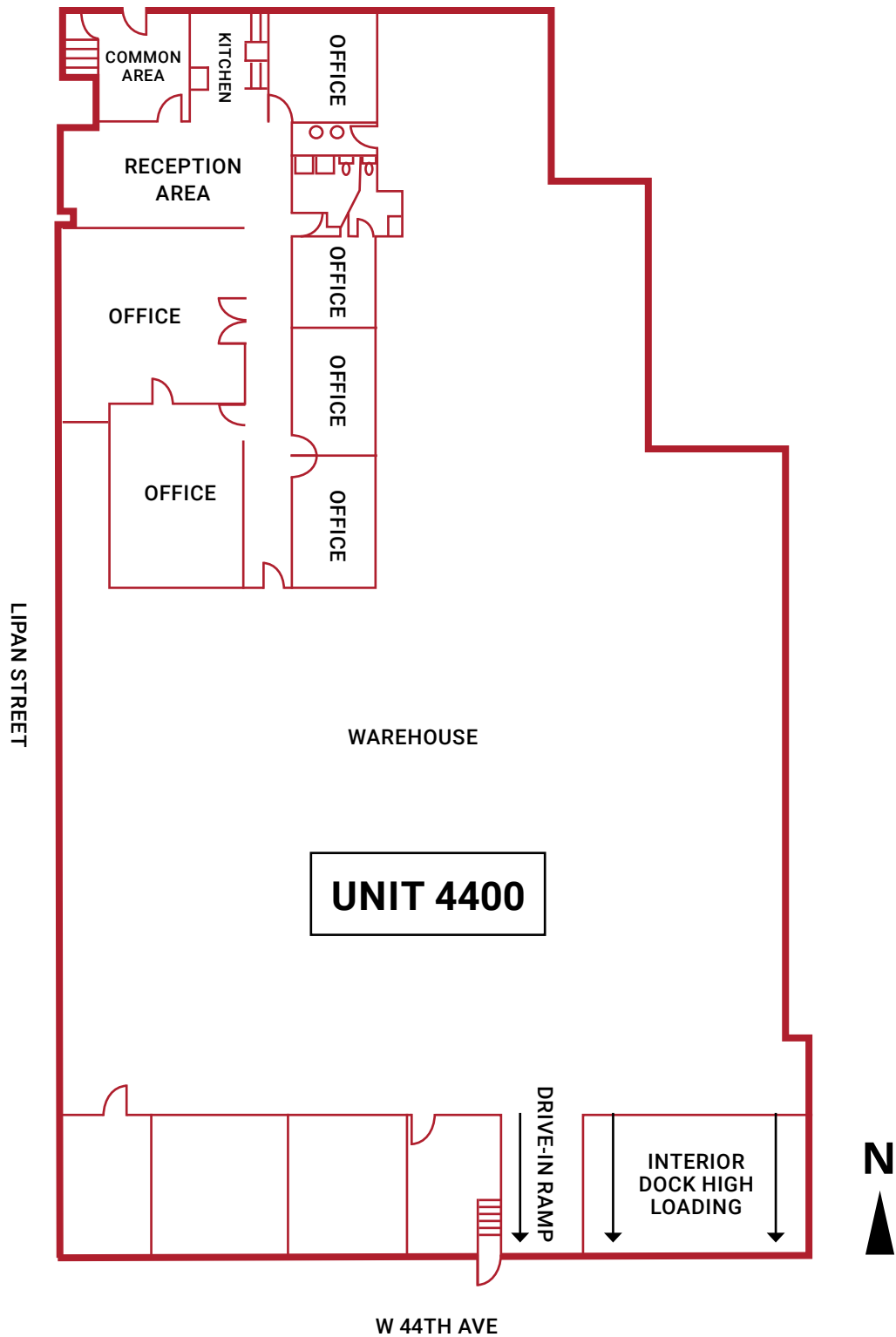


For More Information, Contact:

Steve Fletcher | *Industrial Specialist*
(720) 320-0366
steve@grubercre.com



FLOOR PLAN – UNIT 4400



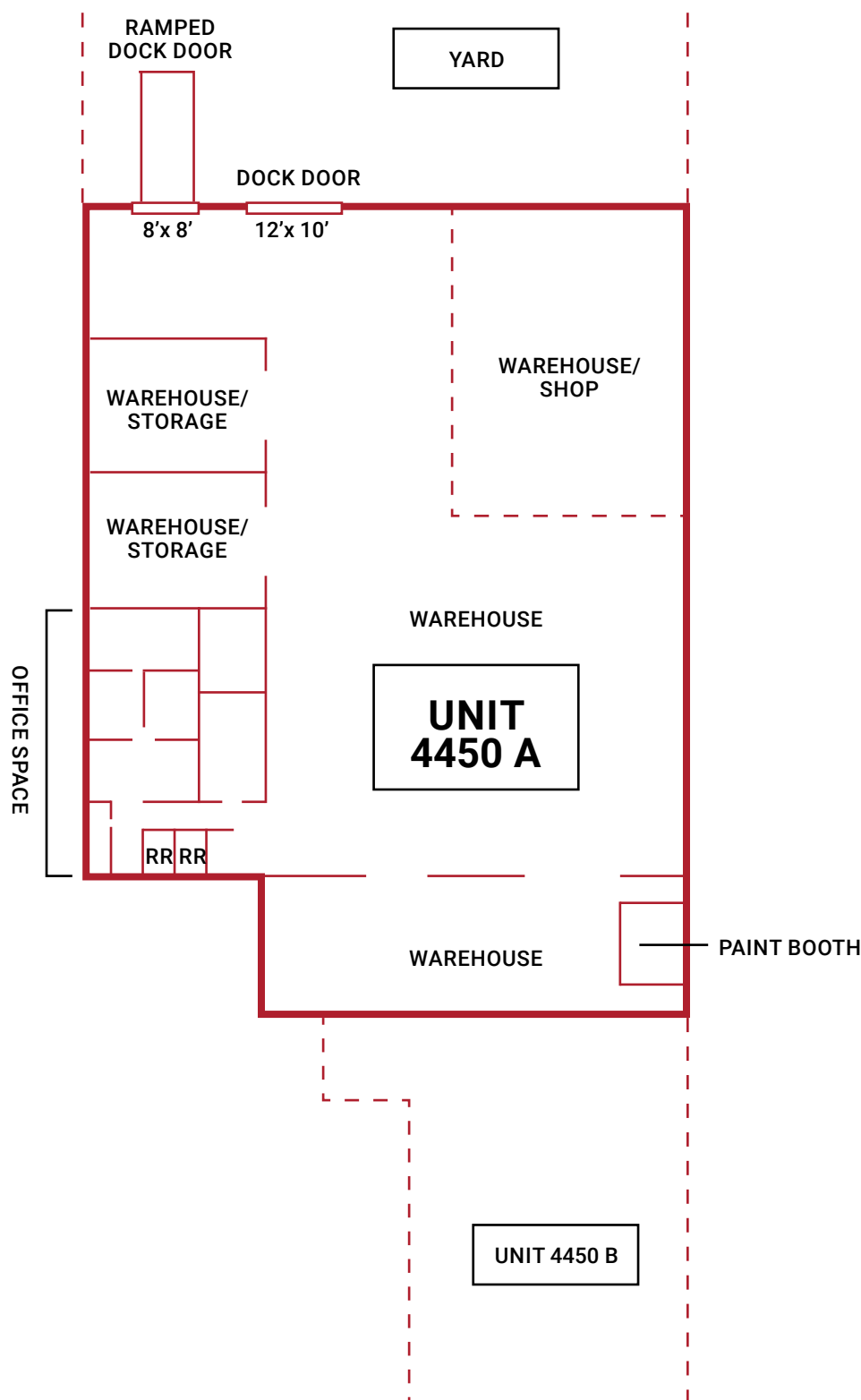
For More Information, Contact:

Steve Fletcher | *Industrial Specialist*

(720) 320-0366

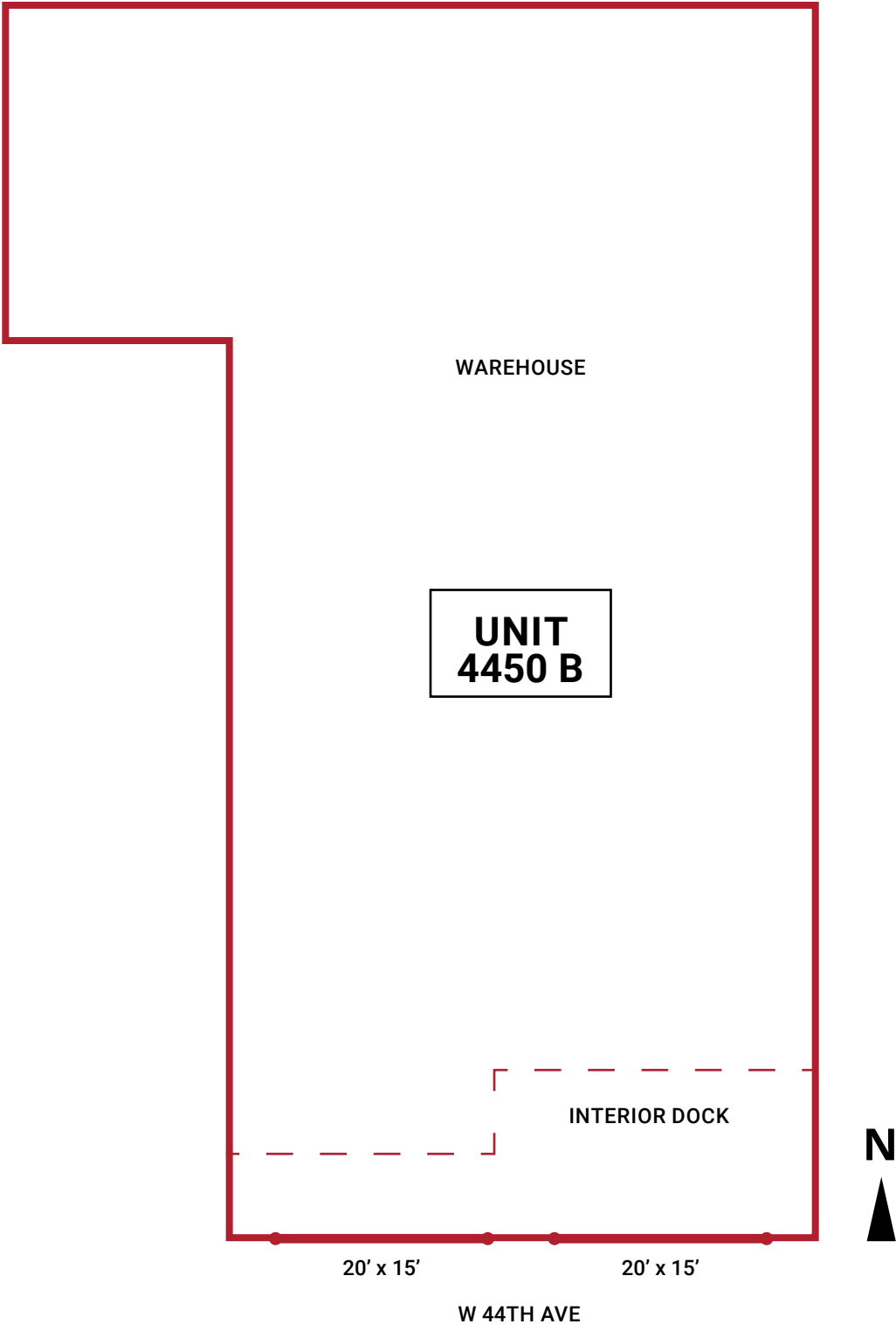
steve@grubercr.com

FLOOR PLAN – UNIT 4450 A



For More Information, Contact:
Steve Fletcher | *Industrial Specialist*
(720) 320-0366
steve@grubercr.com

FLOOR PLAN – UNIT 4450 B



For More Information, Contact:
Steve Fletcher | *Industrial Specialist*
(720) 320-0366
steve@grubercr.com